



1-800-667-9622

[www.synca.com](http://www.synca.com)

**ENAHRI®**  
**BIO FUNCTION**



BIS-GMA FREE VERSION  
**BPA  
FREE**  
DOES NOT CONTAIN BISPHENOL-A

*Biocompatible*



ENA  HRI®  
BIO FUNCTION



THE BIOCOMPATIBLE COMPOSITE WITH UNIQUE  
CHARACTERISTICS FOR ANTERIOR & POSTERIOR  
**B I O C O M P A T I B L E**

We know that you take care of your little patients. For this reason, it is important to use products that are totally safe in this delicate stage of growth.

CLINICAL CASE BY DR. LORENZO VANINI AND DR. STEFANO MASTROBERARDINO



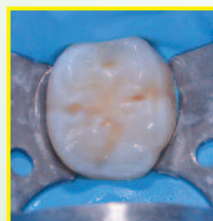
Initial case



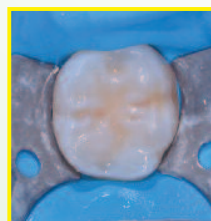
Ameloplastic



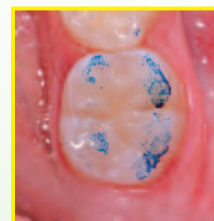
Cavity



Restoration



Sealing



Final Result

**CONTAINS  
OPTIMAL QUANTITY  
OF FLUORIDE**

ENA HRI® BIO FUNCTION is completely biocompatible to guarantee a perfect integration in harmony with the human body without releasing any toxic substance

The UDMA and TCDDMDMA innovative formula is zero degree cytotoxicity and Bis-GMA free, an organic compound that exhibits estrogenic properties in human body causing health problems. It contains nanoparticles aggregated that cannot penetrate the cell membrane, unlike free nanoparticles whose effect on health are still object of discussion.

AVAILABLE IN 9 DENTINS AND 3 ENAMEL SHADES

# ENA HRI<sup>®</sup> BIO FUNCTION



ENAMEL

## ENA HRI BIO FUNCTION ENAMEL

EHRBF1	BF1 Enamel (low value)	5 g
EHRBF2	BF2 Enamel (medium value)	5 g
EHRBF3	BF3 Enamel (high value)	5 g

DENTIN

## ENA HRI BIO FUNCTION DENTIN

EHRBD0	Dentin BD0	5 g
EHRBD0,5	Dentin BD0,5	5 g
EHRBD1	Dentin BD1 (A1)	5 g
EHRBD2	Dentin BD2 (A2)	5 g
EHRBD3	Dentin BD3 (A3)	5 g
EHRBD3,5	Dentin BD3,5 (A3,5)	5 g
EHRBD4	Dentin BD4 (A4)	5 g
EHRBD5	Dentin BD5	5 g
EHRBD6	Dentin BD6	5 g



1-800-667-9622  
[www.synca.com](http://www.synca.com)