

TECHNOLOGY AND PRICE BREAKTHROUGH FOR ONE-VISIT RESTORATIONS

- 3 latest generation intra-oral scanners
- AI design and in-office milling options
- Seamless nesting design workflow
- Latest generation lithium disilicate pre-crystallized milling blocks
- and more ... ALL available through SYNCA!



VISIT US AT A CONVENTION NEAR YOU

PDC: #1545 / ODA: #1539 / JDiQ: #1323

Discover our latest innovations at PDC, ODA and JDiQ 2026. Come see us in person to benefits of our exclusive convention PROMOS!



MAGNIFICATION LOUPES WITHOUT COMPROMISE!

KEPLER ADVANCED V2

4.0x + 5.0x + 6.0x + 7.0x

- Switch mag. easily via the Turn'N'Click system
- Very lightweight design (only 49g for two oculars), delivering high-powered magnification without compromising on comfort
- Unparalleled sharpness from low to high magnification

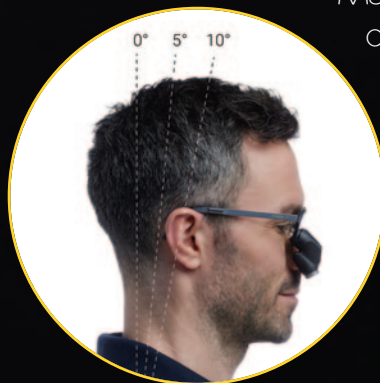


- Fine-adjustable focus on each ocular
- Made of titanium and carbon fibre-reinforced composite

KEPLER REFLEKT

4.0x or 6.0x

- Crystal clear bright images with propriety lens system
- A perfect working position with slight ergonomic head tilt
- Peripheral views of patient's faces while working



- Magnesium and titanium ocular casing for the most lightweight and comfortable ergonomic solution
- Powerful "can't live without" Fine Focus adjustment

KEPLER KOMPAKT V2**3.4x or 5.0x or 7.6x**

- Ultra-lightweight (weight of two oculars with correction lenses:
3.4x: 37.3g | 5.0x: 39.2g | 7.6x: 43.7g)
- Suits the most demanding procedures
- Wide field of view, crystal-clear from edge to edge
- Powerful Fine Focus adjustment
- Freedom of movement via incredible depth of field

WIDE FIELD-OF-VIEW (at 45cm)**3.4x**

◀ • 95mm • ▶

5.0x

◀ • 62mm • ▶

A Leading Competitor

3.5x

◀ • 73.6mm • ▶

7.6x

◀ • 43mm • ▶

A Leading Competitor

4.5x

◀ • 50.8mm • ▶

NEW!**TECHNOLOGY &
CRAFTSMANSHIP**

ExamVision loupes are made by hand with quality components customized to meet your needs. Facial features, prescriptions, eyesight and ergonomic issues are implemented in the final design and production. All this to give you an outstanding and long-lasting loupe experience.

We offer the most customisable loupes available, built from only the finest components. Measured in your clinic by your local Synca specialist, your loupes are made to measure by optometrists in Denmark. ExamVision produces and measurements. They then undergo a rigorous quality control process before leaving. All products are the result of a perfect synergy between technology and craftsmanship.

- AI crown, inlay/only and veneer designs in 60 seconds
- High tech and reliable milling system with over 11,000 installations worldwide
- So affordable, it's a fast and smart decision to gain your competitive advantage

Trust Synca to set up your office with your open-system one-visit restorations workflow. Get the latest scanning, AI design and in-office milling options. Choose between 3 unique scanner options, several AI design solutions, reliable and fast milling – all with a mission to increase your practice profitability.





SAVE
\$9,000

Complete systems for \$1,378 per month or less
– with 36 months Fastlease at 3.99%

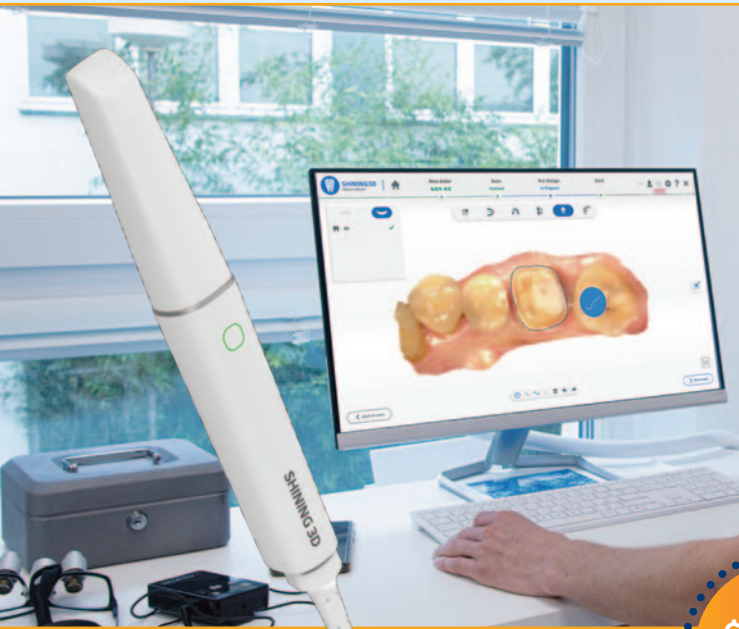
Complete system, including UP3D P42 Plus compressor-free milling system & UP610 latest generation scanner, UPCAD design software with AI, F30 glazing furnace, shipping and basic installation.



BONUS: Receive your firsts 50 milling blocks FREE!

HASS Amber Mill Direct Milling blocks are a pre-crystallized latest generation lithium disilicate that offer superb esthetics, high strength and unique properties making it ideal for in-office in-direct restorations. (see p. 12)

3 LATEST GENERATION INTRA-ORAL SCANNERS



AORALSCAN ELF

Ergonomic, lightweight and functional, this compact scanner offers enhanced speed, smart functionality and exceptional accuracy. It includes three interchangeable tips to meet a variety of clinical needs with ease. ELF is designed for optimal scan of hard and soft tissues. Includes IntelliBite for fast and accurate bite registration, for improved design and less chairside adjustments. Available in wired or optional wireless configurations.

ONLY
\$428
/month

Purchase price of \$14,500*
Special 3.99% lease rate
with 36-month Fastlease

IPG (big) tip
For edentulous cases

Standard tip
For adult use

Mini tip
For pediatric use



AORALSCAN ELITE

The ultimate scanner for capturing hard and soft tissue data, particularly effective in edentulous patients. It incorporates exclusive intra-oral photogrammetry and includes Cap Scan bodies, specifically designed for immediate loading cases. It includes three interchangeable tips to meet a variety of clinical needs with ease. Available in wired or optional wireless configurations.

ONLY
\$766
/month

Purchase price of \$25,995*
Special 3.99% lease rate
with 36-month Fastlease

UP610

Simplify your workflow and elevate your practice. The UP610 helps you capture vivid and precise digital impressions and is an ideal scanner to start your journey in the digital realm, or to update an aging, slower and less precise product. It is ideal for routine inlays, onlays, crowns, bridge and veneer cases.

- 30% more accurate – 10 microns for a full arch
- 27mm scan depth
- Scan a single arch in less than 30 seconds



NOW ONLY: \$7,999*
Regular price: \$9,550

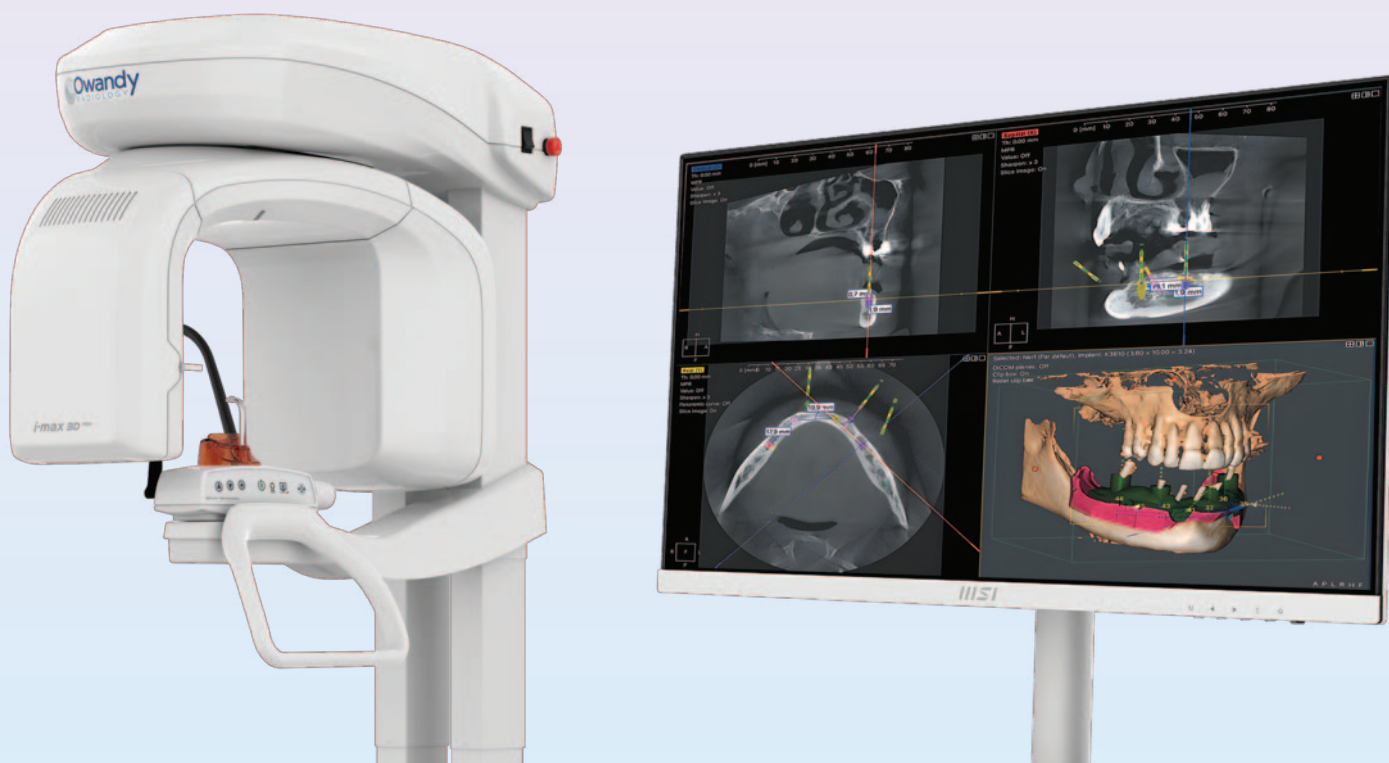


***Satisfaction Guarantee! – Lowest Price Guarantee!**

All scanners purchased from Synca include a 30-day complete satisfaction guarantee. Synca guarantees for 30-days the lowest price available from an authorized Canadian reseller.

- Upgrade your digital PAN to keep your competitive edge and latest features
- Switch to 3D Cone Beam imaging for current standard of care in implantology, endodontics, ortho and enhanced diagnostics
- Run your imaging on CADI® for ultimate reliability and image quality

Owandy is one of the original innovators in digital panoramic imaging. Manufactured in France, Owandy products are renowned for their solid performance, reliability and are now sold in all developed countries around the world.



ONLY
\$2,457
/month

SAVE \$5,000 / NOW ONLY \$2,457* per month
– with 36 months Fastlease at only 3.99%

Latest update Owandy 2D/3D Cone Beam imaging system with software, shipping, typical installation & training. (Shipping and installation price may vary)



***Lowest Price Guarantee!**

Synca guarantees for 30-days the lowest price available from an authorized Canadian reseller.

IS SENSOR SELECTION GETTING CONFUSING?

Synca offers 3 price points for sensors that are compatible with most brands of imaging software using twain drivers, or are perfectly integrated for superior performance within CADI®.

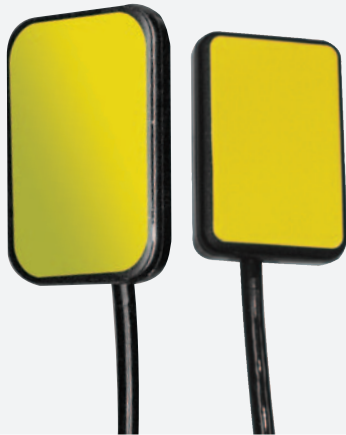


CADI® OPTIMUM AIR

- Most diagnostic sensor available today
- Fastest and most comfortable exams
- Elimination of the most fragile components of dental sensors
- Wireless freedom

Cost per x-ray:
\$0.45*

PROMOTION:
\$7,995



CADI® OPTIMUM

- Image diagnostic ability matching top sensors available today
- Unsurpassed image quality for high-end scintillator/fiber optic sensor system
- Replace the cable - not the sensor!

Cost per x-ray:
\$0.34*

PROMOTION:
\$6,099

(#2 sensor)



PLUTO

- Available in 4 sizes
- CMOS direct coating Csi-Tl
- Active area: 26 x 36mm (size 2)
- Twain driver included
- 2-year warranty

Cost per x-ray:
\$0.12*

PROMOTION:
\$2,039

(#2 sensor)

*Cost per x-ray assumes 300 x-rays taken per sensor per month over 5 years, or 18,000 x-rays

HANDHELD-TRIPOD MOUNT 3D FACE SCANNERS



METISMILE

- Use a face scan for all cosmetic cases, all/on-x cases, or denture cases - essentially anything involving a smile.
- Dental technicians work with 3D, and a photograph just doesn't provide enough information to best design a cosmetic case.
- Prevent occlusal cants, buccal corridors not filled properly or a host of other cosmetic issues.
- Handheld or tripod operation, infrared flash-free operation, fast acquisition in 10-20 seconds. FS launcher software included. Open system design.
- Integrates perfectly with intra-oral scan and CBCT. Easy, fast and break through pricing for this technology.

ONLY
\$248
/month

Purchase price of \$8,350*

Special 3.99% lease rate with 36-month Fastlease



METISMILE MR - the future of jaw dynamics with 4D

This advanced version of Metismile provides a new standard of care. It tracks and analyses mandibular movement trajectory. It is used to determine optimal jaw relation and is an optimal tool for increasing vertical dimension.

Use in Prosthodontics, orthodontics, surgery, and digital smile design.

3 modules:

- Mandibular trajectories - view all movements
- Optimal jaw relation calculation
- Mandibular

ONLY
\$398
/month

Purchase price of \$13,450*

Special 3.99% lease rate with 36-month Fastlease



***Satisfaction Guarantee! – Lowest Price Guarantee!**

All scanners purchased from Synca include a 30-day complete satisfaction guarantee. Synca guarantees for 30-days the lowest price available from an authorized Canadian reseller.

5 DAYS IMPLANT MARATHON MEXICO - MAY 27-31, 2026

LIMITED TO 10 PARTICIPANTS

- 5 days hands-on surgical experience with actual patients
- Place 3-4 implants / day at live surgical events
- Personalized 2-on-1 mentoring for focused guidance and feedback
- Master the art of planning surgeries effectively using CBCT and Guided Surgery Templates under the guidance of experienced mentors – skills you can instantly implement with your own patients
- Clinical experience with plasma-rich growth factors and advanced hard and soft tissue regeneration techniques



**REGISTER
TODAY!**



ImplantsMent



Early Bird: **\$11,990 USD** | Reg. Price: **\$14,990 USD**

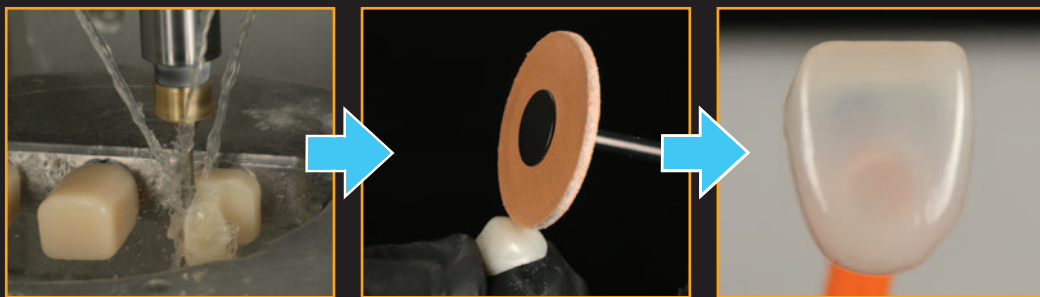
1-647-864-1799 | abhi.b@synca.com

SOLVE THE CHALLENGES FACED WITH MILLING INDIRECT RESTORATION MATERIALS

NO OVEN REQUIRED

Pre-crystallized lithium disilicate millable glass ceramic blocks shorten the fabrication time.

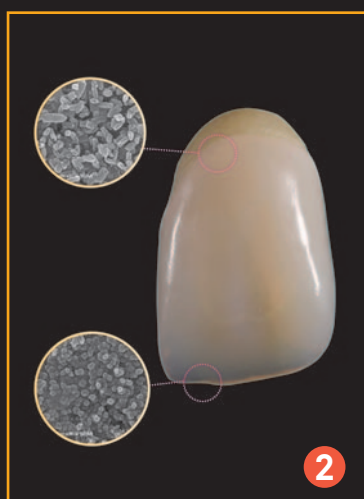
**NOW!
AT SYNCA**



> Simply Mill & Polish **OR** Mill, Stain/Glaze (with glazing oven)



1



2

REAL DEGRADATION AND THREE LEVELS OF TRANSLUCENCY (1)

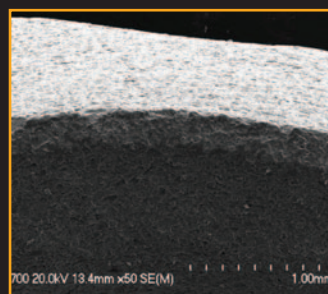
Choose from three levels of translucency, each with a graded microstructure, from cervical to incisal/occlusal regions, without additional characterization.

OPTIMAL STRENGTH AND WEAR REDUCTION (2)

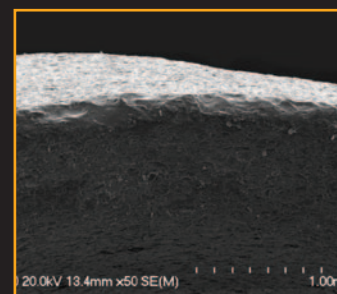
Generate different strengths in the cervical and incisal regions, for optimal strength and wear reduction of the antagonist.

EDGE STABILITY

Achieve excellent marginal fit and cervical contour.



Amber® Mill Direct



Competitive product

**SPECIAL
OFFER!**

PROMO 2+1! Risk-Free Offer!

INTRODUCTORY OFFER: Get your 1st package of 5 blocks **FREE OF CHARGE**, when you purchase 2 more packages of 5 blocks. If you're not completely satisfied with the performance of Amber® Mill Direct, you can return the other 2 packages for full credit.