



ELIMINATE THE FLAW!

Kepler Reflekt from ExamVision offers a host of features making it the most usable and powerful ergonomic loupe available today!

see
page **3**



VISIT US AT A CONVENTION NEAR YOU

PDC: #1237 / ODA: #1625 / JDiQ: #309

Discover our latest innovations at PDC, ODA and JDiQ. Or call us today for a consultation with one of our specialists.

CADI® OPTIMUM AIR

- Clearer and more accurate x-rays!
- Wireless freedom for comfortable and faster procedures!
- Significantly increased reliability!



see
page **4**



- Switch mag. easily via the Turn'N'Click system
- Very light and comfortable, for all-day wear – 20 grams lighter than other comparable loupes
- Unparalleled sharpness from low to high magnification
- Fine-adjustable focus on each ocular
- Made of titanium and carbon fibre-reinforced composite

POWERFUL & CONVENIENT
POWERGO LIGHTING SYSTEM

ExamVision coaxial extender provides a perfect line-of-sight alignment



- Features a very slim, round design with hands-free operation
- Made of high quality aluminum
- Lightweight, battery only 155g and lamp of only 18g (including frame part)
- Guaranteed up to 8 hours of use
- Include a curing filter at no extra cost
- Include a second backup cable
- 1 year warranty on battery
- 3 years warranty on lamp & unit

SEE FOR YOURSELF
Make an appointment today!



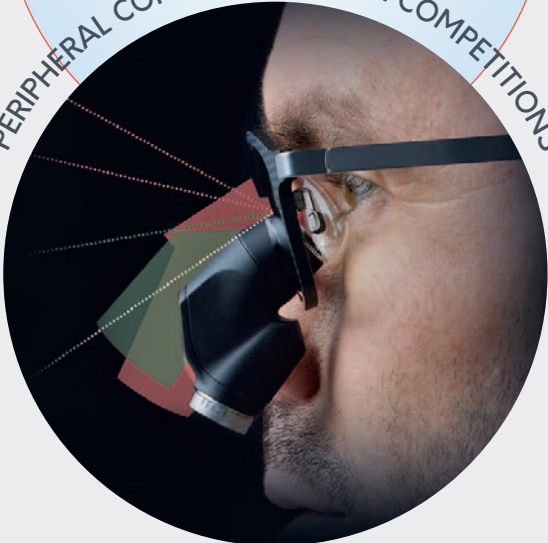
- A perfect working position with slight ergonomic head tilt
- 4.0x magnification with wide field-of-view
- Peripheral views of patient's faces while working
- Ability to communicate with staff and patients while wearing roof prisms loupes
- Magnesium and titanium ocular casing for the most lightweight and comfortable ergonomic solution
- Powerful "can't live without" Fine Focus adjustment

WIDE FIELD-OF-VIEW

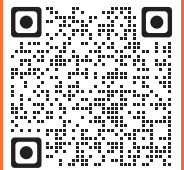
4.0x

◀•• 72mm ••▶

PERIPHERAL COMPARISON WITH COMPETITIONS



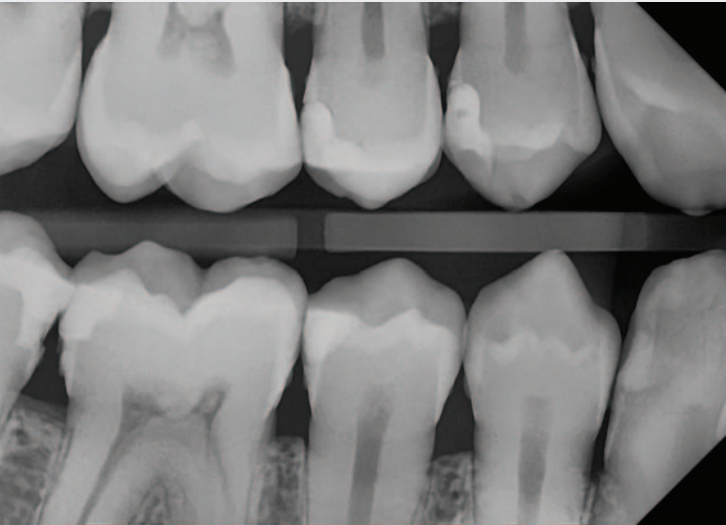
DESIGNING
THE PERFECT
ERGO LOUPE
VIDEO



SEEING IS BELIEVING!

Come see us at a convention near you OR schedule an in-office consultation today!

Ask about our 45-day satisfaction guarantee!



1. CLEARER AND MORE ACCURATE X-RAYS

From incipient decay, to visualization of bone loss, root damage, or all forms of subtle pathologies, CADI® Optimum AIR is unsurpassed in its ability to provide essential diagnostic information.

HOW WE DO IT:

Traditional dental x-ray sensors consist of a series of components that transfer x-ray signals into visible light, that can then be detected by a CMOS or CCD chip. This involves two transfers and a loss of diagnostic ability.

CADI® Optimum AIR eliminates the scintillator and fiber optic plates that are required in competitive x-ray sensors.

2. WIRELESS FREEDOM FOR COMFORTABLE AND FASTER PROCEDURES

Simply place the sensor in the specially designed holder system. You and your patients will experience the most streamlined and comfortable x-ray taking process available today.

HOW WE DO IT:

CADI® Optimum AIR uses low energy technology to quickly and effectively transmit imaging data wirelessly to a docking station, located in each operator. A fast charge system ensures it's always ready for the next x-ray.

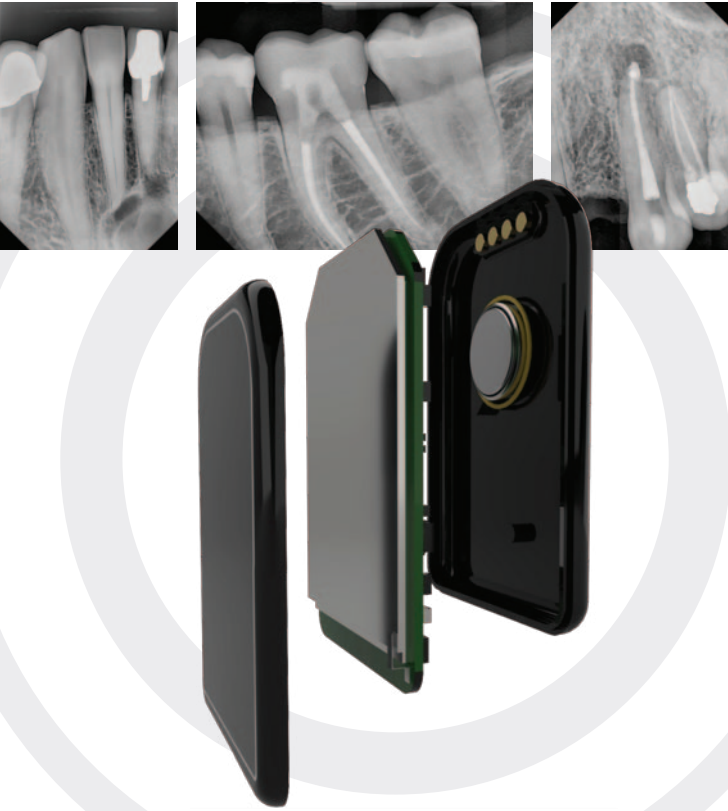
The unique, specially designed holder system maximizes patient comfort and speed of sensor placement.



Actual size



3 GROUNDBREAKING FEATURES THAT CHANGE THE STANDARD IN DIGITAL INTRA-ORAL X-RAYS!



3. SIGNIFICANTLY INCREASED RELIABILITY

The two most fragile components of traditional x-ray sensors are the wire and fiber-optic plate/scintillator combination found within traditional sensors. We've eliminated them.

CADI® Optimum AIR sensor casing is robust to be resistant to impacts, falls and compression. It is sealed to protect from dust and liquids.

HOW WE DO IT:

CADI® Optimum AIR features a unique, exclusive direct x-ray capture. There is no need to convert the x-ray waves into visible light using fragile components.

By developing a highly reliable and consistent wireless system, there is no need for a wire to transmit the signal from sensor to the computer.

SPRING
PROMO

Regular Price: \$12,003 **Price Breakthrough: \$7,995!**
Synca is offering an introductory price breakthrough. You can now get a CADI® Optimum Air system for the price of a traditional name brand sensor.

*If you are using CADI® software, the latest version of CADI is required to access the full features of Optimum AIR. If you are using another imaging software that integrates Twain Drivers, a twain driver must be purchased at \$499.

CONSIDER AN UPGRADE TO CADI®?

- Special prices if acquiring any Synca x-ray sensor, Pan, 3D imaging, or intra-oral camera
- Transfer your existing images and x-rays into CADI® (transfer service available from Synca)
- Installation and training services available

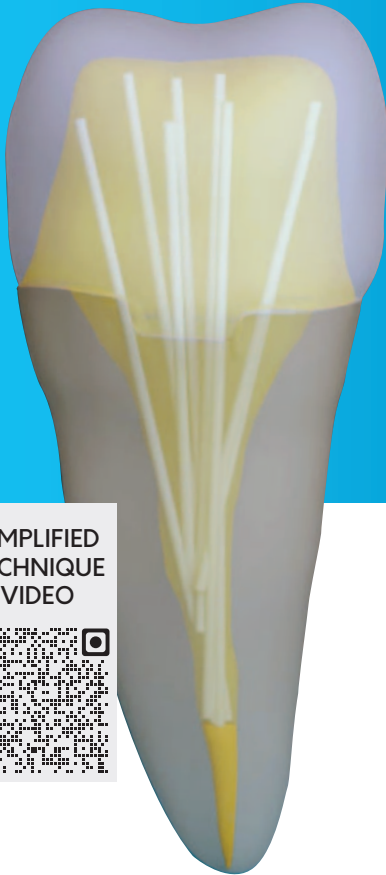


SUPERIOR TO NO-POST, SINGLE POST OR ENDO-CROWN RESTORATIONS!

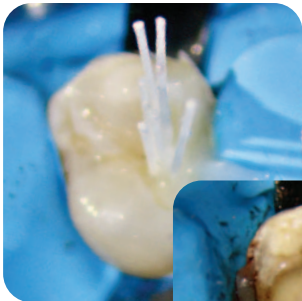
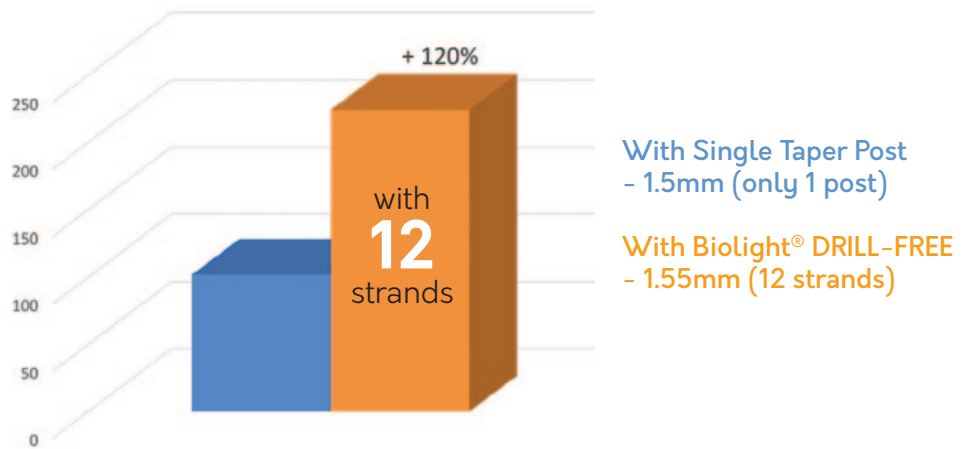
71% MORE RESISTANT TO DEFORMATION BEFORE FRACTURE

- Eliminate drilling and all risks associated with intra-canal drilling
- Increase the fracture resistance of your restorations VS. unsupported endo-core restorations
- Multi-post procedure increases bond strengths significantly due to increased total surface area
- Epoxy-free; Highly radiopaque; Excellent light transmission

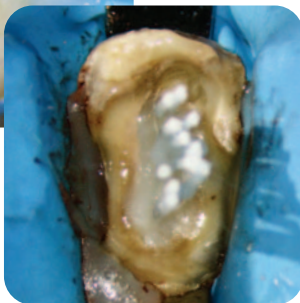
SIMPLIFIED
TECHNIQUE
VIDEO



INCREASED CORONAL PART'S TENSILE STRENGTH OF 120%

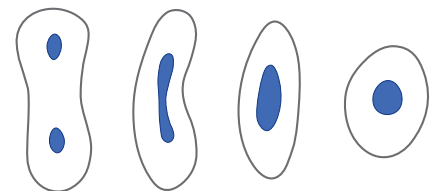


Courtesy of
Dr. Mancino



ANY SHAPE OF CANAL

Adapt your posts to the root canals, NOT the other way around! Conserve 100% of remaining tooth structure.



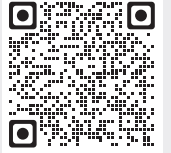
SAVE \$141! Purchase the Biolight® DRILL-FREE assorted kit (content 5 multi-posts of each 4 sizes) and obtain a **FREE** Biolight® CORE DC cement + 1 practice model* **FREE!** - for only \$414

Biolight® CORE DC is a dual cure, bubble-free cement & core build-up with zirconium dioxide nano-particles.



INTEGRATE CADI® WITH CADI® OPTIMUM AIR

QUICK CADI® OVERVIEW VIDEO



- Tired of a limited, closed system for managing x-rays and images in your practice?
- Would you like to benefit from a truly open system that works perfectly with all brands of Health Canada-approved x-ray and imaging products?
- Would you like to have one imaging software that will grow with your practice?

ANY



ANY



ANY



ANY



ANY

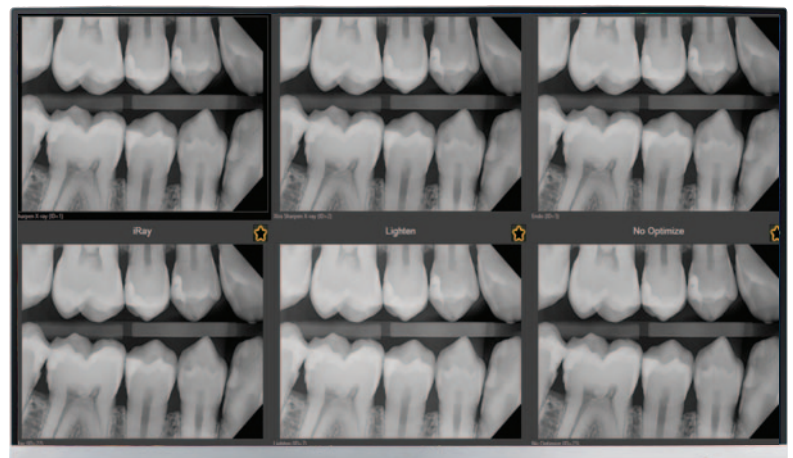


ANY



CADI® UNIQUE FEATURE: **REAL TIME FILTERING ABILITY**

Use the CADI® pre-set real time filtering feature button to instantly show up to 6 views of the same image.





Minimally invasive protocols with:

▶ **ENDORET® PRGF®**

A perfect biological approach for hard & soft tissue regeneration



▶ **BIOLOGICAL DRILLING**

Drilling at low speed provides numerous advantages



▶ **3.0 IMPLANTS (Ø 2.5, Ø 3.0, Ø 3.3)**

Simplified treatments for horizontal atrophies



▶ **SHORT & X-SHORT IMPLANTS**

Simplified treatments for vertical atrophies



Dr. Eduardo Anitua MD • DDS • PHD

TOP 2% of the most cited and influential researchers in the world!

Learn simplified and predictable treatment approaches for **HORIZONTAL & VERTICAL atrophies**

- Horizontal & vertical growth using PRGF
- Biomechanics of short, x-short implants & immediate loading
- Treatment of atrophic jaws
- Planning single, partial and full edentulism rehabilitation
- Expansion, splitting
- Complication management
- Immediate loading and complex rehabilitation
- Alternative approach to sinus lift with short & x-short implants

Including **LIVE** surgeries of complex rehabilitations with Dr. E. Anitua

Tuition Fee: \$6,370
40 CEU credits



LEARN & LEAD WITH DR'S SALLY ISSA & ROMEO PACULANAN



BTI STUDY CLUB (Greater Toronto Area)

LIVE surgeries on sundays!

TOPICS:

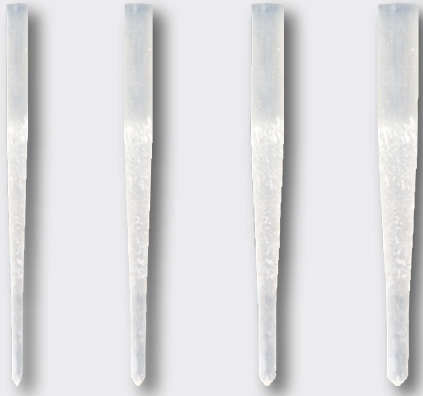
- Tissue grafting
- Do's and don'ts in treatment planning
- Digital workflow
- Extraction & socket preservation technique
- Implant prosthesis
- Immediate implant placement & temporization

Study Club Subscription: \$500 / Year



PERFORMANCE-PROVEN, RELIABLE AND LOW COST!

DT POST®



- Double taper posts more radiopaque VS. Quartz posts
- Higher bonding with self-adhesive cements VS. Quartz posts
- More biocompatible: Epoxy-free and bis-GMA-free
- Reduces stress transmission to the root VS. Metal & Ceramic

DT POST® refills (10 posts):

\$149 ea.

2 @ \$128 ea.

3 @ \$112 ea.

(Mix & Match accepted)

PROMO: SAVE \$249
Buy 4 refills and get 1-Biolight CORE DC FREE!



STiK!® SE1

- Single bottle self-etch adhesive
- Effective marginal sealing – no microleakage
- Elimination of postoperative sensitivity

STiK!® SE 1 (5ml):

1 @ \$138 ea.

4 @ \$135 ea.

8 @ \$127 ea.



ENA BOND

- Independently tested at 30 MPa bond strength to dentin
- Single bottle 5th generation
- Fluorescent as natural tooth
- NO acetone, NO BPA

ENA BOND (5ml):

1 @ \$114 ea.

4 @ \$111 ea.

8 @ \$104 ea.



SUPERFIT®

- SUPER high tear strength
- SUPER hydrophilic formula
- SUPER snap set
- Direct-to-you low pricing

Soft Putty	Heavy
Medium	Light

SuperFit! Soft Putty:

\$289

2 @ \$250

3 @ \$211

SuperFit! Heavy or Medium:

\$68

6 @ \$62

12 @ \$60

SuperFit! Light:

\$68

2 @ \$62

4 @ \$60

*The lowest product will be free,
Mix & Match accepted

PROMO: 4+1 FREE*!



Magne
EDUCATION
PASCALMAGNE.COM

JANUARY 16-18, 2025
MASTERING MORPHOLOGY
& ESTHETICS

FEBRUARY 6-8, 2025
THE ULTIMATE VENEER

FEBRUARY 28 - MARCH 1, 2025
ORTHODONTIC COURSE
FOR RESTORATIVE DENTISTS

MARCH 13-15, 2025
ADVANCED COMPOSITE VENEERS

APRIL 15-19, 2025
MAGNE DINAMICO
CURSO PRESENTIAL EN 5-DIAS

JUNE 26-28, 2025
POSTERIOR COMPOSITE
RESTORATIONS

JULY 17-19, 2025
ADVANCED INLAY/ONLAY

AUGUST 15-17, 2025
CADplus

SEPTEMBER 25-27, 2025
THE ULTIMATE VENEER

FULL PROGRAM
NOW AVAILABLE AT
MagneEducation.com

info@magneeducation.com

BPA-FREE COMPOSITE with IDEAL WEAR RESISTANCE



(5g syringe **OR** 12 x 0.3g Tips)

\$150.90 ea. **3 @ \$144.80 ea.** **6 @ \$136.60 ea.**

100% BIOCOMPATIBLE

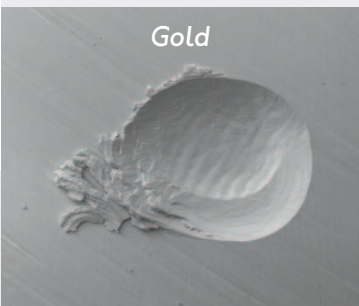
No BPA, no BisGMA, no HEMA, no TegDMA and no release of nanoparticles!

SO SIMPLE - USE ONLY 3 SHADES

With a 1 layer technique you can accomplish all Vita® shades with only 3 shades (BF1, BF2, BF3).

WEAR RESISTANCE LIKE GOLD

Bio Function is the ONLY composite with a wear ratio equal to Yellow Gold.



Beautiful Posteriors



Beautiful Anteriors

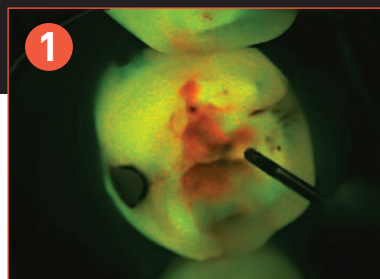


AWARDED FOR DESIGN DESIGNED FOR DENTISTS!

Optimized for the best possible optical, ergonomic and mechanical performance



- Unparalleled mobility with its MonoGlobe design
- Bigger 5-step full Apochromatic lens system for incredible clarity and light transmission
- Choose between VarioFocus4 (200-350mm) or VarioFocus5 (210-500mm)
- Easy documentation with its 4k, HD or smart phone imaging ports



1. Option of fluorescent light (carries detection + better viewing of composite margins)
2. Option of double white lights (perfect for endodontic)



SAVE \$2,588

Purchase an CJ-Optik Flexion microscope and get a BQE Back-up chair with arms **FREE!**